

Connectivity Solutions



Campus Building Complexes
Remote Branch Locations
Data Centers



Data Centers

PROFILE

Large data centers are typically powered by redundant power feeds covered by redundant UPS, often backed by generators.

In smaller data centers, a single UPS may be the only defense against downtime from utility failures.

Unified Infrastructure Monitoring

Heat from high density server racks and blade frames can result in hot-spots that reduce server life and reliability.

Safe Server Shutdown and Load Shedding

Today's data center staff are outnumbered by server computers. Instead of one or two servers powered by a small rack UPS, multiple server racks share a central or zone UPS.



Server Consolidation and Mainframe Migration promise lower costs, greater flexibility, and new problems.



NEEDS ASSESSMENT

- Would unified monitoring of a power environment and related physical infrastructure give you the insight you need without the complexity of multiple monitoring systems?
- Do you have multiple servers running different operating systems sharing one UPS system?
- Do you need to shut down servers automatically before UPS batteries are depleted during a prolonged outage or when room or enclosure temperatures exceed a threshold?
- Would it be helpful to shutdown the less essential servers sooner during an extended power failure, to reserve battery capacity in order to deliver maximum uptime for business-critical servers?
- Do you have a parallel/redundant UPS system? Who should be notified by e-mail when situations develop that threaten or cause lost redundancy in the power delivery system?



Solutions for Data Centers

Chloride offers several families of mid- and high-power UPSs for large and small data center projects.



MopUPS P/R is software that installs on a server computer to monitor multiple UPS modules configured as a parallel or redundant system. P/R watches for system events and module events including lost redundancy due to load changes or module faults. MopUPS P/R will shutdown the host server safely, as well as other servers on the network, when events threaten power availability.



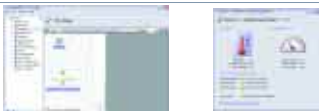
MopUPS NSA (Network Shutdown Agent) is software that installs on server computers to listen on the network for a shutdown signal from MopUPS P/R or ManageUPS NET ADAPTER. Sequenced automated shutdown of less critical server groups reduces the load on the UPS and extends battery time to the most critical servers and network infrastructure.



ManageUPS NET ADAPTER for smaller, stand-alone facilities with a small number of UPSs, ManageUPS adapters are a complete UPS monitoring and management tool with embedded e-mail alert sender, WEB server, network server shutdown controller, and on-board event/data logging.

Optional Environment Sensor accessory module monitors ambient temperature and humidity plus three inputs for monitoring status of generators, air conditioning units, enclosure doors or other devices that communicate status via standard volt-free relay contact points.

For large facilities with enterprise monitoring systems for ICT Network or Building Infrastructure, ManageUPS ADAPTERS host UPS management agents that support SNMP or MODBUS-TCP over ethernet, or Modbus-RTU/JBUS over RS232/422/485 networks. ManageUPS adapters also host optimized management agents for central monitoring of distributed UPSs via Chloride's ManageUPS CIO.



ManageUPS CIO software for central management of multiple UPSs and Environment Sensors in larger or multiple data center facilities. A multi-level pin map helps visualize problem spots by country, city, building or room floor plan.

SECURE POWER CONSULTANCY

Chloride works closely with facilities managers, consultants, contractors and power specialists to ensure secure power is designed in from the start.

Our project management teams work alongside customers to manage complete project rollouts to ensure a successful implementation.



You can rely on our comprehensive power consultancy team to audit requirements and propose solutions.

Each data center, server room, facility complex or remote location is different—different systems from different vendors, supporting different business processes.

Each Facilities Management and Information and Communication Technology (ICT) team have different priorities, policies and methods.

Monitoring System Integration

Facilities and ICT teams may each want to monitor UPS status through separate building and network monitoring systems.

Automated Incident Response Action

The ICT team may want automatic safe shutdown of server computers during extended mains failures, environment over-temperature situations or other faults.

Facilities team may want UPSs powered off after servers have been secured to reduce heat generation when air conditioning systems are without power.

Incident Notification

Network operations managers and server administrators, help desk personnel or facilities managers—each want to be notified of incidents that threaten uptime in their area of responsibility.



NEEDS ASSESSMENT

- Who needs to know about incidents that put power availability at risk?
- Should we integrate UPS status into systems for building monitoring, network monitoring or both?
- Are there other parts of the critical infrastructure that should be monitored along with the UPSs?
- Have we provided for automated safe shutdown of server computers during extended mains fail?

Whatever the situation or requirement, Chloride Connectivity Specialists are ready to help with planning and installation of best practice solutions for both ICT and Facilities Management communities.

Distributed UPSs in Campus Buildings

PROFILE

Education, healthcare, manufacturing, research and office facilities are complex networks with distributed UPS modules in many locations.



Transportation networks present a similar challenge—a significant amount of real property with distributed power systems, managed by a small team of facilities managers.

Simplified Monitoring Optimized for UPS Management

Full scale building monitoring and control systems can be expensive and complex. Chloride has elegantly simple yet effective solutions that allow central monitoring of alarm conditions, provide automated incident notification via email, and allow remote visibility of key performance measures.

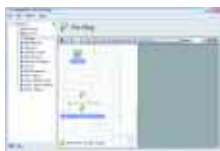


NEEDS ASSESSMENT

- Do your facilities power systems specialists need a central monitoring system that is simple to install and still lets them monitor power loadings, line voltage variations, battery usage history and current alarms in distributed UPSs?
- Do you prefer to use the existing IT communications network to reduce cabling expenses and allow incident messages to be sent simultaneously to multiple communities?
- Would you like to consolidate messaging from simultaneous events to avoid alarm storms?
- Do you have multiple brand UPSs that you would like to monitor under one unified system?



Solutions for Distributed UPSs in Campus Building Complexes



 BACnet/IP Service

ManageUPS NET ADAPTER is a self contained remote monitoring system for facilities or ICT managers responsible for a small number of UPS systems. Adapters provide simple e-mail incident notification and remote access via a web browser for follow-up via internet-enabled PDA.

ManageUPS CIO software for central management of multiple UPS and Environment Sensors in building complex and campus environments.

The optional BACnet service module simplifies integration with higher level building monitoring systems.

UPSs in Remote Branch Locations

PROFILE

Government Service Offices, Restaurants, Convenience Stores, Hotels, Retail Banking and other remote site operations face a combined challenge:

- Facility and ICT teams need to manage a significant and variably aging asset base, comprised of hundreds of low power UPS systems, located in geographies far from central management.
- Hundreds of low-power UPSs provide secure power to hundreds of customer-facing ICT systems that record financial transactions, report inventory flow, and manage labor time tracking.



NEEDS ASSESSMENT

- Do you plan to install software for UPS monitoring and safe server shutdown?
- Would it be useful if the UPS monitoring software works together with the UPS and server system to enable scheduled server shutdown and restart for periodic system grooming, energy saving or security?
- Would you like to receive an e-mail notification whenever incidents may require investigation and corrective action?
- How will you keep track of the status of remote UPSs? Would you be interested in evaluating a monitoring system to help simplify this task?



Solutions for Remote Branch Locations

Chloride offer several families of low-power UPSs at different price points and feature sets to allow cost/benefit matching that best suits specific project requirements.

Localized software (available in English, French, Italian, Spanish, Portuguese, German, Thai and Russian) is bundled with low power UPSs in two editions:

MopUPS EXPRESS provides safe OS shutdown and system restart on power failure or low battery conditions. GUI and feature set is simplified for remote site personnel.

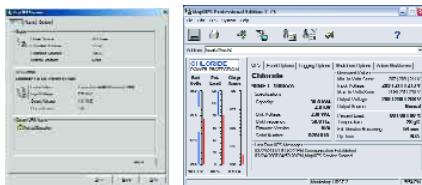
MopUPS PROFESSIONAL is network enabled, server shutdown and UPS monitoring software that supports scheduled system shutdown and restart and includes proxy agent functionality for integration with ManageUPS CIO or SNMP-based network monitoring systems.

Options for enhanced manageability and flexibility include:

Full Featured *ManageUPS NET ADAPTER* with embedded SNMP/WEB agent, Network Shutdown Controller, Event/Data Logging and optional Environment Sensor for unified infrastructure monitoring.

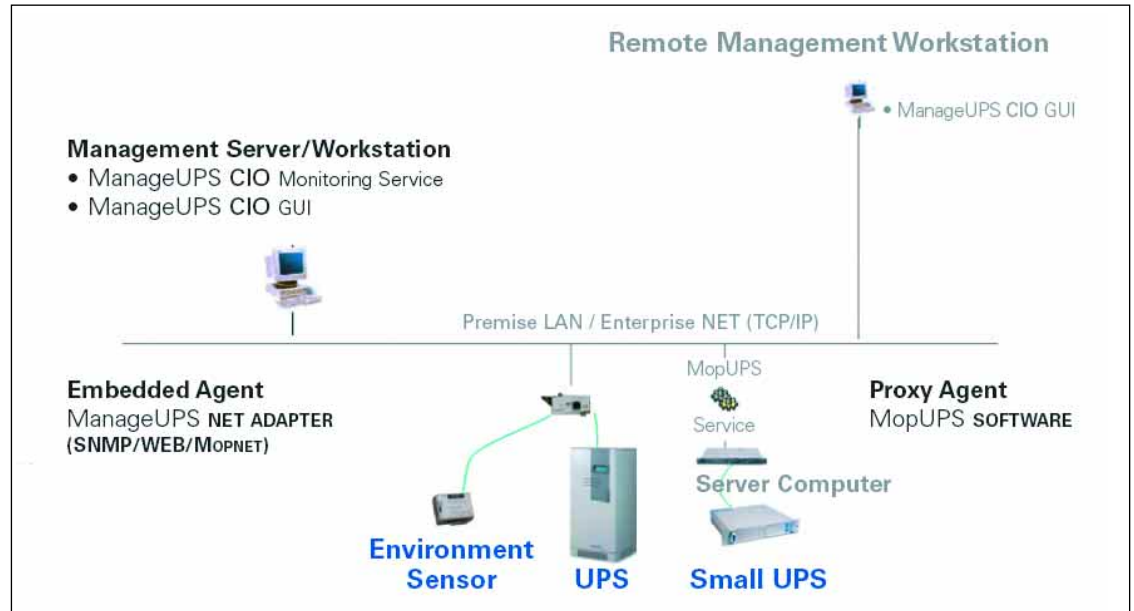
ManageUPS ValuePoint NET ADAPTER with embedded SNMP/WEB agent and essential management features (available from July 2007).

ManageUPS CIO software for central management of remote-site UPSs in wide area network environments with always-on TCP/IP connections between remote and central monitoring locations.



Portfolio of Solution Elements

Chloride's Connectivity portfolio includes network adapters and software that work alone or together to deliver simple solutions to complex requirements.



ManageUPS ADAPTER and MopUPS PROFESSIONAL software can each be complete UPS monitoring solutions for people responsible for small numbers of UPS systems.

ManageUPS and MopUPS can also serve as management agents for central monitoring systems that oversee larger populations of distributed UPSs.

ManageUPS NET ADAPTERS

Specialized Micro-Computers with Embedded Software for UPS Monitoring



ManageUPS NET ADAPTER II - SNMP/WEB for UPSs

Embedded WEB server and SNMP Agent (RFC1628). DHCP or static network setup. Event and data logging. E-Mail incident messaging. Network Shutdown Controller calls server group shutdown with four delay schedules. Includes ManageUPS Discovery and Configuration Utility (DCU) software for easy setup and maintenance.



ManageUPS NET ADAPTER II +E - SNMP/WEB for UPS and Environment

All the same features as the standard adapter with added support of up to 16 environment sensors.

Each sensor measures ambient temperature, relative humidity, three input volt-free relay points. Includes one output control relay for automated incident response.



ManageUPS NET ADAPTER II +B - MODBUS (Jbus) RS232/485 or MODBUS IP (TCP/IP Ethernet)

Provides UPS Status information via embedded WEB server and MODBUS (JBUS) protocol converter for direct integration with Building Monitoring Systems. Media supported include RS232, RS422 and RS485 serial protocols and MODBUS IP over Ethernet.



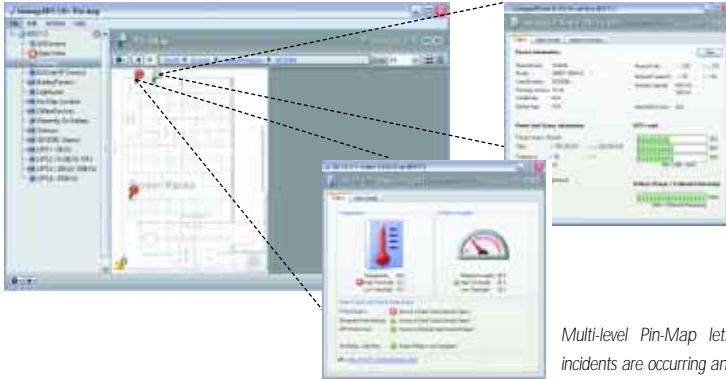
Volt-Free Relay Card

Provides essential UPS status information via volt-free signal contacts. Indicates On-Battery, Low Battery and Summary alarm conditions. Compatible with ACTIVE, LinearPlus, and Sinergy II Series UPS model families.

MESSAGE: Automated messages on faults or events.

MANAGE: Incident history logged for event correlation, system improvement and maintenance planning.

SHUTDOWN: Safe server shutdown on power or environment faults to protect data and equipment.



The optional BACnet service allows easy integration with most building monitor systems over TCP/IP.

Multi-level Pin-Map lets you easily visualize where incidents are occurring and drill down to the device detail.

ManageUPS CIO SOFTWARE

Central Monitoring System for Distributed UPS and Critical Infrastructure



Drag and drop map background simplifies setup and configuration. SmartGroup mechanism lets you define rules for incidents of interest to you. E-mail notification on SmartGroup incident activity keeps you informed. Print report or export lists of devices and properties of interest. Thin-client GUI installs on multiple workstations for easy access anywhere. ManageUPS CIO is available for Windows or Linux server platforms.

MopUPS SOFTWARE

Software for UPS Monitoring and Safe Shutdown of Computers Running Microsoft® Windows® or Open Systems.



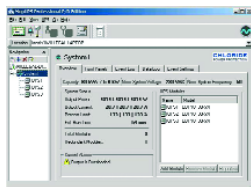
MopUPS® EXPRESS

Used in stand alone PC or LAN Server applications with local administrators. Provides on-screen status, data and event logging and controlled shutdown of a single Microsoft® Windows® computer. Included with ONEplus™ UPS, and Desk Power UPS.



MopUPS PROFESSIONAL

Used in applications where one or more servers on a single UPS require graceful shutdown during extended power failures. Professional networking capabilities include e-mail event messaging, remote administration, remote monitoring integration with ManageUPS CIO and shutdown of multiple Windows servers via remote log-in over TCP/IP. Included with ACTIVE Series, Sinergy II Series and ON Series UPSs. Supports Windows, Linux, Unix and NetWare® OS.



MopUPS PROFESSIONAL P/R Edition - for Parallel/Redundant UPS Systems

Serves as a central monitoring station for parallel UPS system. UPS status information is retrieved via TCP/IP network connection to ManageUPS net adapters.

Perfect for server clusters and blade servers powered by redundant UPS. P/R monitors redundant server UPS and remote UPS powering SANs, switches, routers or other IT infrastructure that servers may depend on. Notifies when load levels or module faults threaten UPS redundancy or availability of remote network resources. Run MopUPS P/R on one or two hosts in a server set and control shutdown of remaining servers via integrated Network Shutdown Controller. Supports Windows, Linux, Unix.



MopUPS nsa (Network Shutdown Agent)

MopUPS NSA when centralized shutdown of multiple computers simplifies configuration and setup. MopUPS NSA listens on the network for shutdown notification from the Network Shutdown Controller in MopUPS P/R (shared parallel UPSs) or ManageUPS II (shared single UPS). Supports Windows, Linux, Unix.

CHLORIDE

Chloride North America

27944 North Bradley Road
Libertyville
IL 60048
USA
Telephone: 800 327 8801
Facsimile: 847 680 5124
www.chloridena.com

Chloride Italy

Via Fornace, 30
40023 Castel Guelfo (BO)
Italy
Telephone: +39 0542 632 111
Facsimile: +39 0542 632 120
enquiries@chloridepower.com

Chloride United Kingdom

George Curl Way
Southampton, Hampshire
SO18 2RY
United Kingdom
Telephone: +44 (0) 23 8061 0311
Facsimile: +44 (0) 23 8061 0852
uk.enquiries@chloridepower.com
www.chloridepower.com/uk

Chloride France

1 rue Felix Potin
ZA les Belles Vues
91290 Arpajon
France
Telephone: +33 (0) 1 69 26 12 81
Facsimile: +33 (0) 1 60 83 18 16

Masterguard Germany

Schallershofer Str. 141
D91056
Erlangen
Telephone: +49 9131 9855 100
Facsimile: +49 9131 9855 270
info@masterguard.de
www.masterguard.de

Chloride Australia

Ground Floor
16 Giffnock St, North Ryde
NSW 2113
Australia
Telephone: +61 2 9888 1266
Facsimile: +61 2 9888 1966
australia.sales@chloridepower.com
www.chloridepower.com/au

Chloride Thailand

127/25 Panjathani Tower 20th Floor,
Nonsee Road
Chongnonsee, Yannawa,
Bangkok 10120
Thailand
Telephone: +662 296 9800
Facsimile: +662 681 0109
thailand.sales@chloridepower.com

Chloride Middle East

Building 5, Office 104
Dubai Internet City - Dubai
UAE
PO Box 72536
Telephone: +971 4 391 3205
Facsimile: +971 4 391 6803
middleeast.sales@chloridepower.com
www.chloridepower.com/middle-east

Masterguard Turkey

Guc Kaynaklari Ltd. Sti.
Cavusoglu Mah. Spor Cad. No:84 Kat: 2-3
34870 Kartal-Istanbul
Telephone: +90 216 586 7900
Facsimile: +90 216 586 7979
info@masterguard.com.tr
www.masterguard.com.tr

Chloride Brazil

Av. Eng. Alberto de Zagottis, 695
Jurubatuba - São Paulo - SP
CEP: 04675-085 Brazil
Telephone: +55 11 5541 5599
Facsimile: +55 11 5541 5599
vendas@chloridepower.com

Chloride Group PLC Corporate Headquarters

Ebury Gate
23 Lower Belgrave Street
London
SW1W 0NR
United Kingdom
Telephone: +44 (0) 20 7881 1440
Facsimile: +44 (0) 20 7730 5085
enquires@chloridegroup.com
www.chloridepower.com

For a full list of contacts in other countries, please visit our website at www.chloridepower.com
For all the latest information on Chloride's Connectivity Solutions, please visit: <http://connectivity.chloridepower.com>



This company has a policy of continuous product development and improvement, and we therefore reserve the right to vary any information or specification without prior notice.

© 2007 Chloride. Part number 917-202 @ Rev. -

ManageUPS and MopUPS are registered trademarks of Chloride Group PLC or its subsidiary companies. All other trademarks, product and corporate names are the property of their respective owners.